

# Guide to the FIT Count insect groups

## Bumblebees

- Fluffy, large (1-3 cm), rounded bees
- Contrasting stripes (black, yellow, red, or white), or gingerly all over
- May have a ball of pollen on back legs
- Antennae often bent at base



*Look closely at the eyes and antennae*



## Solitary bees

- Variable in size (0.4-2 cm) and appearance; over 250 UK species!
- Often have short hairs; ginger, brown or black
- May carry dry pollen on hairy back legs, or under body
- Antennae straight out in front



*Bees have long eyes down sides of the face*



## Hoverflies

- Flies with distinctive hovering flight
- Some mimic bees and wasps in colour and stripes
- Look for large round eyes and short antennae



*Hoverflies have short antennae*



## Butterflies and moths

- Large patterned, opaque wings
- Wings held flat or together at rest
- Long proboscis for drinking nectar, rolled up under body at rest



## Small insects

- Any insect smaller than 3 mm



*Small, but important*

## Honeybees

- Gingerly or brown with dark stripes and a long body (1.2 cm)
- Less hairy than bumblebees
- May have a ball of pollen on back legs which hang down when flying
- Antennae often bent at base



*Bees and wasps have long antennae*

## Wasps

- Common wasp (bold black and yellow stripes) and many other species (often black and red)
- Shiny body with a narrow 'waist'
- Can be small; never carry pollen
- Often have a boxy, rectangular head



## Other flies

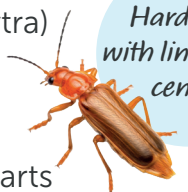
- Many species; often brown, black, grey, yellow, green or blue
- Large rounded eyes, covering most of head
- Short (or not visible) antennae



*Flies (incl. hoverflies) have large, round eyes*

## Beetles

- Hard, often shiny case (elytra) covering body and wings
- A straight line often visible down the centre of elytra
- Biting or chewing mouthparts



*Hard case with line down centre*

## Other insects larger than 3 mm

- None of the above or if you are unsure
- Includes Bugs; like beetles but wings folded over, often in an X or Y shape
- Includes Sawflies; like wasps but typically hairless with a wide waist



*Sawflies like this have a wide waist*



**Note:** Insects are NOT shown to scale

## Don't count

- Spiders
- Slugs and snails
- Centipedes and millipedes
- Larval stages of insects e.g. caterpillars



**FITCount**

More guidance available on the PoMS website:  
[ukpoms.org.uk/fit-counts](http://ukpoms.org.uk/fit-counts)

